


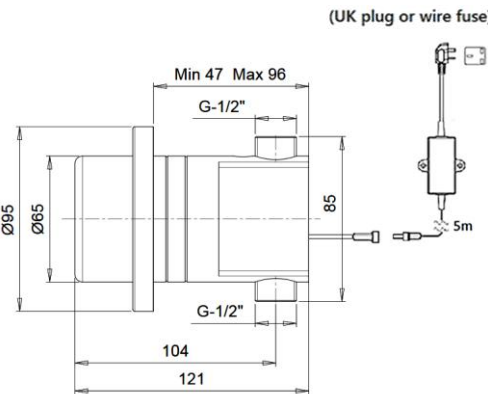

**Acme Sanitary Ware Co Ltd**

Acme Building, 22-28 Nanking Street, Kowloon, Hong Kong
 Tel: 2388 7171 Fax: 2710 8012
 E-mail: acme@acmesanitary.com.hk
 Website: www.acmesanitaryware.com.hk



PROJECT		REF		REV	ITEM CODE	
LOCATION		DATE			PAGE	

SANITARY WARE SPECIFICATION SHEET

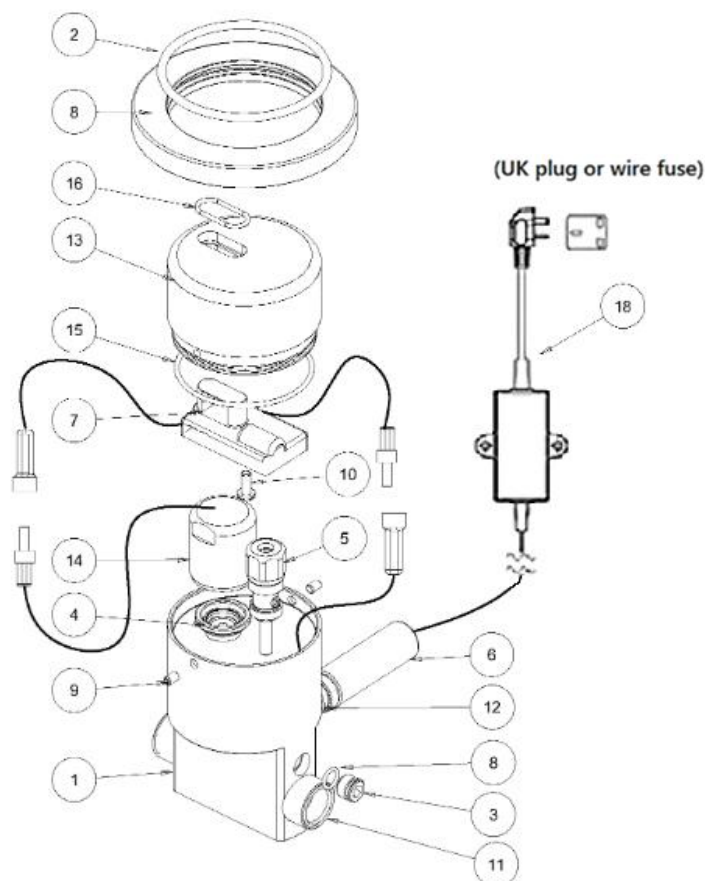
Item Descriptions	Stern (Israel) "Neptune 1032" Chrome plated concealed wall-mounted sensor shower in AC Supply with 5m wire AC 110-240 Vac 50/60Hz to 9V 0.3A IP68 waterproof switching transformer	Illustration/ Drawing
Dimensions	L95 x W121 x H95 mm	
Model	Neptune 1032 E	
Code Number	613400	
Finish	Chrome Plated	
Supplier	Acme Sanitary Ware Co. Ltd Mr. Eric Wong/ Mr. Don Yuen	
Contact Tel/Fax	(852) 2388-7171 / (852) 2710-8012	
E-mail	acme@acmesanitary.com.hk	
Website	www.acmesanitary.com.hk	
NEPTUNE 1032 E Ref # 613400 Touch free electronic shower control operated by an infrared sensor. Non return valves and filters included. All components are located inside the product body. The following settings can be changed by using the Stern remote control: sensor range, security time, delay in, delay out and on-off. Application: Combines an elegant design with high quality into a vandal resistant product. Helps washrooms to stay hygienic, safe and water saving. Ideal for sport facilities and spas. Use: Touch free electronic shower control. The shower will be activated once the user steps within the sensor range.		
CONCEALED ELECTRONIC SHOWER FOR COLD OR PREMIXED WATER Power supply: Internally mounted 9V battery or 9V transformer Recommended water pressure: 0.5-8.0 bar (7-116 PSI) Preset sensor range: 55 cm – Adjustable manually or with a remote control Security time: 10 minutes Delay In / Out Time: 10 Seconds		
		Installation: Wall mounted concealed Water supply: Cold or premixed water (1 inlet) Water temperature: Max 70 °C Operating pressure: 0.5 - 8.0 bar Power source: 9V Transformer

* All information of the above is for the reference only. No prior notice is made if any changes.



SANITARY WARE SPECIFICATION SHEET

Neptune 1032E (613400)



Quantity	Part Number	Description	Cat. No.
	-	Seals and Screws Kit	07210008
1	15	O-ring	
1	16	O-ring	
2	9	Screw	
1	10	Screw	
	-	Sensor Kit	07220037
1	7	Electronic Sensor	
1	16	O-ring	
	5	Filter Stop Valve Kit	07212002
	-	Cover kit	07270005
1	13	Cover	
1	15	O-ring	
2	9	Screw	
	-	Solenoid valve kit	07230002
1	14	Solenoid valve	
1	4	Diaphragm	
	4	Diaphragm	04500001
	-	Cover plate kit	07260010
1	8	Rosetta	
1	2	O-Ring	
	18	Transformer	TBC

Note: In order to locate the relevant spare part, please check the corresponding parts and part number in the drawing. Minimum order quantity will be required.

* All information of the above is for the reference only. No prior notice is made if any changes.

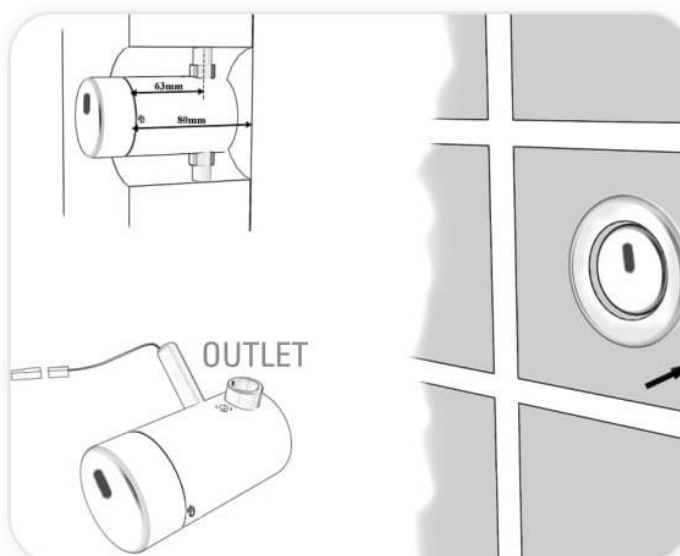


INSTALLATION

- 1) Shut off the water supply.
- 2) Cut an adequate opening in the wall for the dimensions of the product and if your model is Neptune 1032 E for the electric wires.
- 3) Insert the product through the wall opening and assemble the inlet to the water supply pipe in the wall.
- 4) Connect the outlet to the pipe leading to the shower head.
- 5) Mount the shower body to the wall so it will protrude from the wall as shown in the drawing.

6) If your model is Neptune 1032 E place the transformer near the electricity plug (up to 3 meters from the electronic shower body) and connect the transformer wire to the shower body through the hole.

Important: After connecting the power source, wait a few seconds before activating the shower control to avoid entering into "adjusting mode".



- 7) Turn on the water supply and check for leaks.
- 8) After the ceramic tiles are installed, assemble the cover plate over the shower body on the wall.
- 9) If the range is unsatisfactory, refer to the section titled "Settings adjustment".



TROUBLE SHOOTING

PROBLEM	INDICATOR	CAUSE	SOLUTION
No water coming out of the shower head:	1. Sensor flashes continuously when user's hands are within the sensor's range.	Low battery.	Replace battery.
	2. Red light in the sensor does not flash once when user's hands are within the sensor's range.	1. Range is too short.	Increase the range.
		2. Range is too long.	Decrease the range.
		3. Battery is completely used up	The battery must be replaced.
		4. Unit is in "Security Mode"	
		5. Sensor is picking up reflections from the washbasin or another object.	Eliminate cause of reflection.
	3. Red light in the sensor flashes once when user's hands are within the sensor's range.	1. Connectors between the electronic unit and solenoid are disconnected.	Connect the electronic unit connectors to the solenoid.
		2. Debris or scale in solenoid.	Unscrew solenoid, pull out the plunger and the spring from the solenoid and clean them.
		3. The central whole in the diaphragm is plugged or the diaphragm is torn.	Clean the whole or replace the diaphragm.
		4. The water supply pressure is higher than 8 bar.	Reduce the supply water pressure.
	1. Sensor flashes once when user's hands are within the sensor's range.	Debris or scale in diaphragm or the diaphragm is torn.	Clean the whole or replace the diaphragm.
		2. Sensor is dirty or covered	Clean or eliminate case of interference.
Water flow from spout does not stop:	2. Red light in the sensor does not flash once when user's hands are within the sensor's range.	2. Sensor is picking up reflections from mirror or another object.	Decrease the range or eliminate cause of reflection.

* "Security Mode": If the sensor is covered for more than 90 sec. the shower will automatically shut off water flow. To return to normal operation remove any blockage.